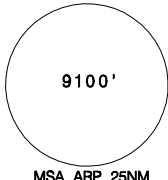
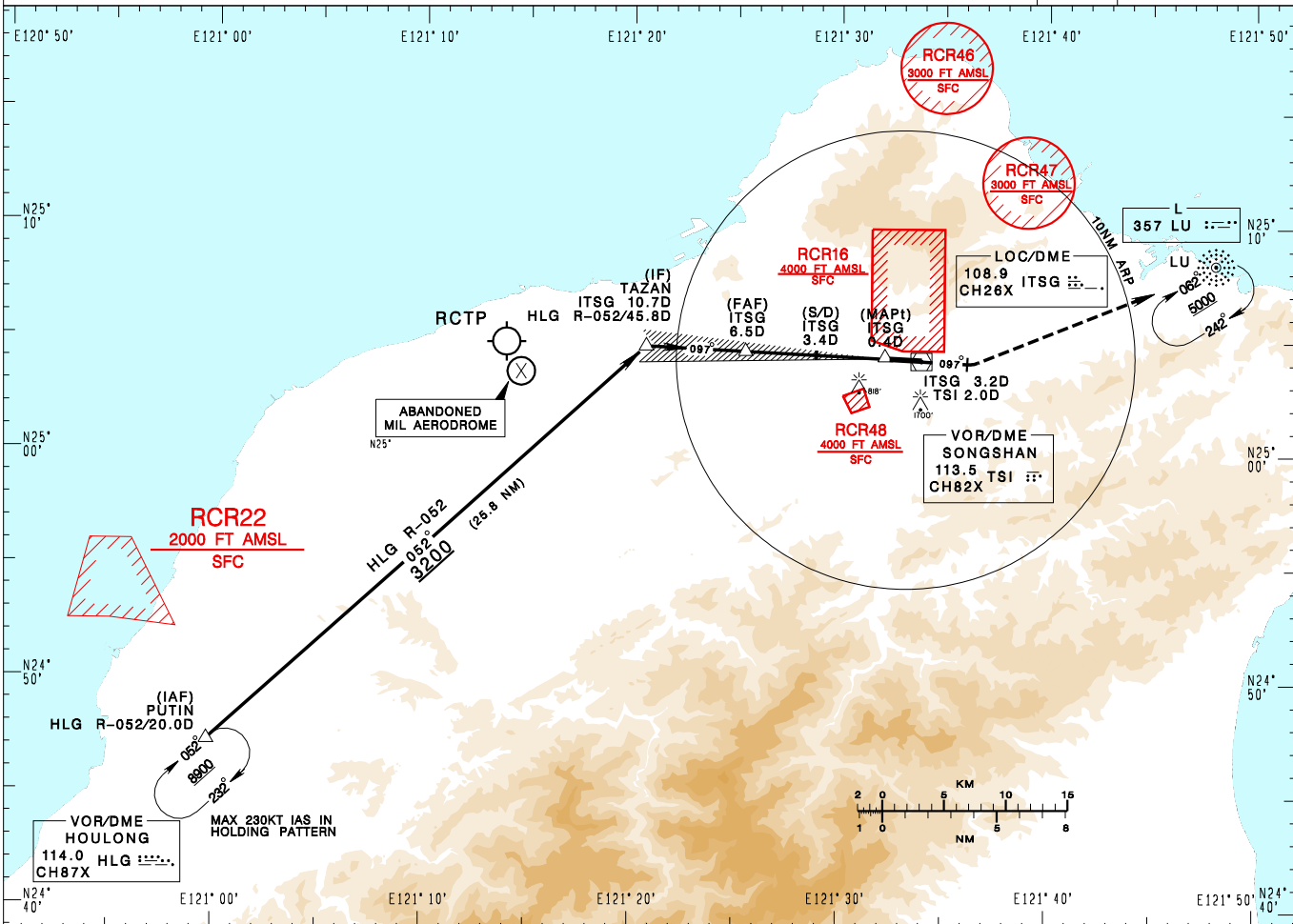


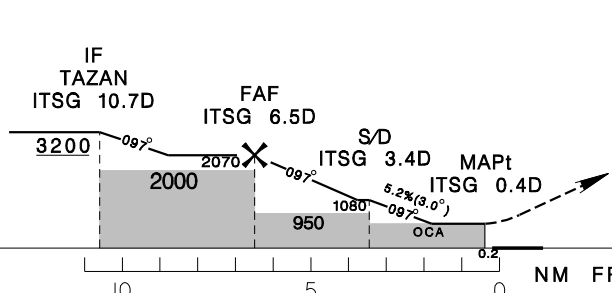
臺北/松山機場
TAIPEI/SONGSHAN AD

RCSS
LOC RWY10

TAIPEI APP 119.7 119.6 125.1			SONGSHAN TWR 118.1			ATIS 127.4 341			VAR 5° W-2022	
Apt Elev: 18'		Rwy10 THR Elev: 13'		Trans Level: FL130		Trans Alt: 11,000'				
BEARINGS ARE MAGNETIC; DISTANCES ARE NAUTICAL MILES; ELEVATIONS, HEIGHTS IN FEET										



6.5DME	6.0DME	5.0DME	4.0DME	3.0DME	2.0DME	DIST to ITSG
2070	1910	1590	1270	950	640	ADVISORY ALT



MISSED APCH:
CLIMB ON HDG 097 UNTIL ITSG 3.2D/TSI 2.0D, THEN TURN LEFT DIRECT TO LU, CLIMB TO 5000 AND HOLD.
IF UNABLE TO REACH 5000 AT LU, ADVISE ATC FOR RADAR VECTOR.

NOTE
WHEN LU IS NOT AVAILABLE,
MISSED APCH:
CLIMB ON HDG 097 UNTIL ITSG 3.2D/TSI 2.0D, THEN TURN LEFT HDG 070, CLIMB TO 5000, EXPECT RADAR VECTOR.

MINIMA (OCA IN FT, VIS IN M, OCH IN FT)				
CATEGORY	A	B	C	D
STRAIGHT IN	MA minima climb gradient 4% (244ft/NM)	620/800 RVR 750	602	620/2100 602
	MA minima climb gradient 2.5% (152ft/NM)	790/800 RVR 750	772	790/2900 772
STRAIGHT IN (ALS OUT)	MA minima climb gradient 4% (244ft/NM)	620/1600	602	620/2800 602
	MA minima climb gradient 2.5% (152ft/NM)	790/1600	772	790/3600 772
CIRCLING	1180/3600 1162		N/A	

NOTE
1. A 1700ft-HIGH BUILDING AT 2.1 NM SOUTH OF THR 28.
2. A 818ft-HIGH BUILDING AT 2 NM SW OF THR 10.
3. CIRCLING ONLY AUTHORIZED FOR CAT A HELICOPTERS.

*DME REQUIRED.

CHANGES: IAF; RCR49 COMPLETELY WITHDRAWN; MAG VAR AND TRACK